

TEMPO 110

By the rivers of Babylon

2e stem



INTRO

Musical notation for the Intro section, measures 1-4. Chords: F, ff, F, f, F, ff, F, f, C. Fingering: *4 *4 5 6, *4 *4 5 6, 6 7 *5.

Musical notation for the Refrain section, measures 5-8. Chords: C, cc, C, c, f. Fingering: *4, *4 *4 *5 *4, *4 *4, *4 *4 *4 *4 5, 6 6 6.

Musical notation for the Refrain section, measures 9-12. Chords: F, F, ff, F, f, C, C, cc, C, c. Fingering: *4 *4 5 6, 6 7 *5, *4, *4 *4 *4 *4 *5.

Musical notation for the Refrain section, measures 13-16. Chords: C, f, F, ff, F, f. Fingering: *4 *4 *4, *4 *4 *4 *4 5, 6 6 6, *4 *4 5 6.

Musical notation for the Couplet section, measures 17-20. Chords: F, C, C, cc, C, c, f. Fingering: 6 7 *5 *4, *4 *4 *4 *4 *5 *4, *4 *4, *4 *4 *4 *4.

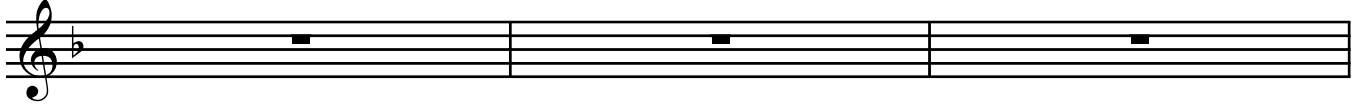
Musical notation for the Couplet section, measures 21-24. Chords: F, C, F, ff, F, f. Fingering: 6 6 6 5 6 5, 6 6 5 6, 5 *4 *4, 5 *4 *4, *4, *4 *4 *4 *4 5.

Musical notation for the Couplet section, measures 25-28. Chords: F, c, C, cc, C, c, F, ff, F, f, C, f, C, F. Fingering: 6 6, 7*5 *4, *4 *4, *4 *4 *4, 6 7, 6*4 *4, *4 *4 *4 *4.

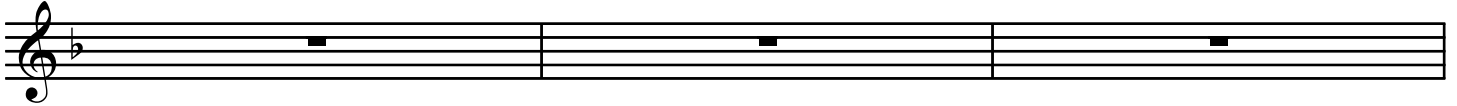
Musical notation for the Couplet section, measures 29-32. Chords: F, C, f, C, F, C, f, C, F, F, ff, F, f. Fingering: 6 6 7, 6*4 *4, *4 *4, 6 6 6 7, 6*4 *4, 6 5 *4.



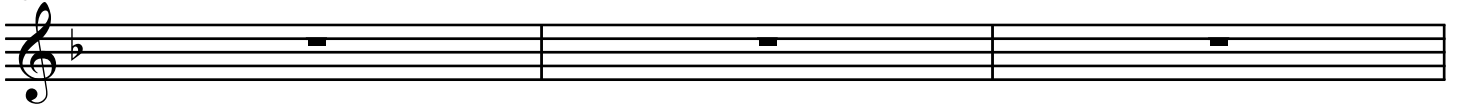
42



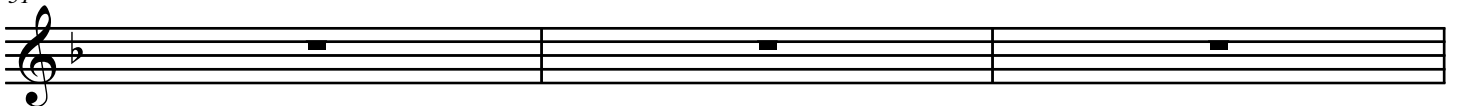
45



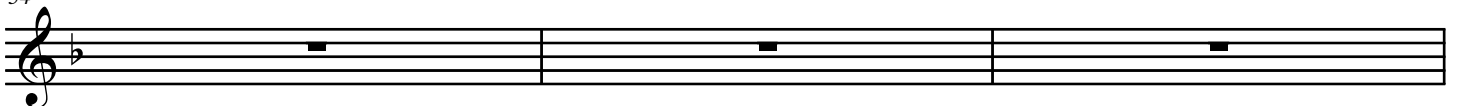
48



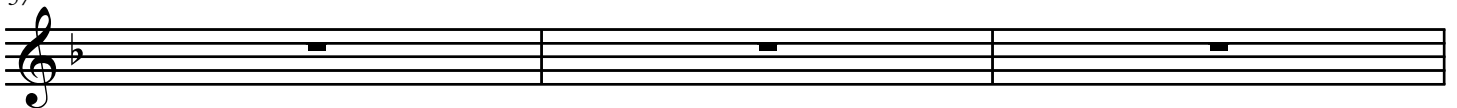
51



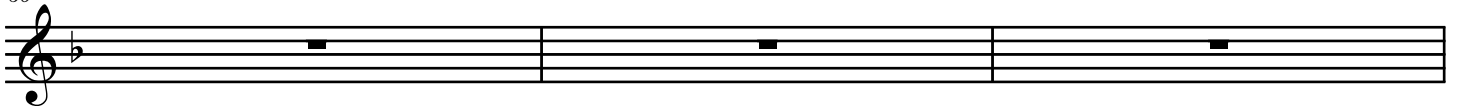
54



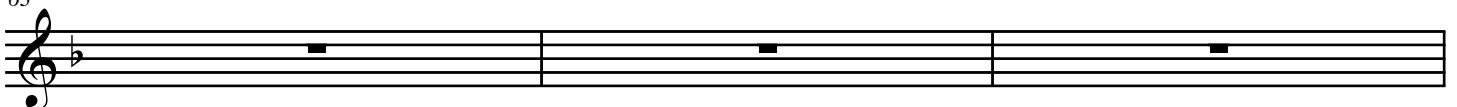
57



60



63





66

A musical staff in treble clef with a key signature of one flat (B-flat). It contains three measures of music, each with a single black square note on the second line of the staff.

69

A musical staff in treble clef with a key signature of one flat (B-flat). It contains three measures of music, each with a single black square note on the second line of the staff.

72

A musical staff in treble clef with a key signature of one flat (B-flat). It contains one measure of music with a single black square note on the second line of the staff.