

In een groen, groen knollenland

♩ 150

Musical staff 1 (measures 1-7):
3 3 4 5 5 5 6 5 *4 5 *3
3 3 4 4 4 4 4 4 4 4

Musical staff 2 (measures 8-15):
4 4 C 4 4 *2 3 4 5 5
3 3 *3 *2 3 2 3 4 4 4

Musical staff 3 (measures 16-24):
5 3 4 5 5 5 6 5 *4 5 *3 4
4 3 3 4 4 4 4 4 *3 4 4 3

Musical staff 4 (measures 25-32):
4 4 5 4 3 2 3 3
3 3 4 3 2 2 2 2

Musical staff 5 (measures 33-40):
3 3 4 4 3 *2 3 *2 4 5
3 2 3 3 2 2 3 3 4 4

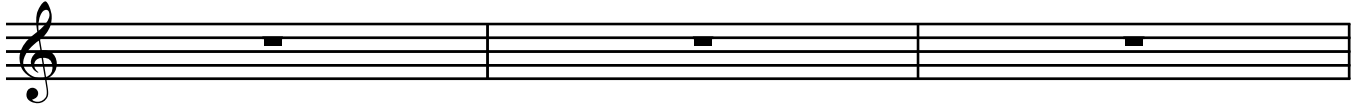
Musical staff 6 (measures 41-48):
4 4 4 3 4 5 5 5
3 3 3 2 3 4 4 4 4

Musical staff 7 (measures 49-56):
3 4 5 C C 6 5 *4 5 *3 4
3 3 4 *3 *3 4 4 *3 4 4 3

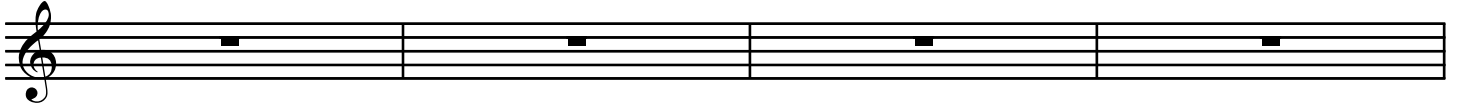
Musical staff 8 (measures 57-64):
4 5 4 3 2 3 3 3
3 4 3 2 2 2 2 3



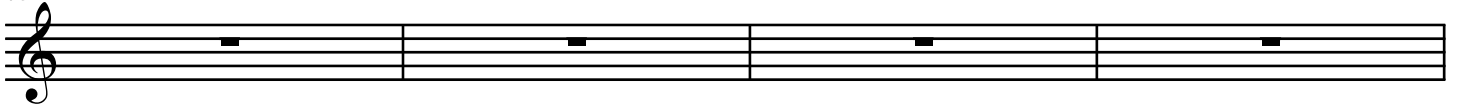
66



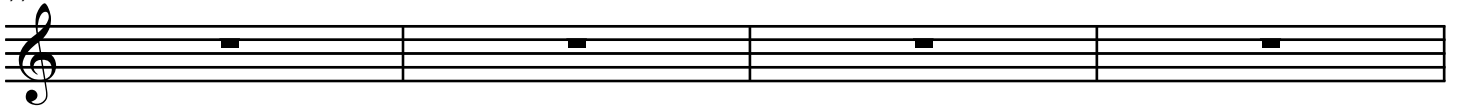
69



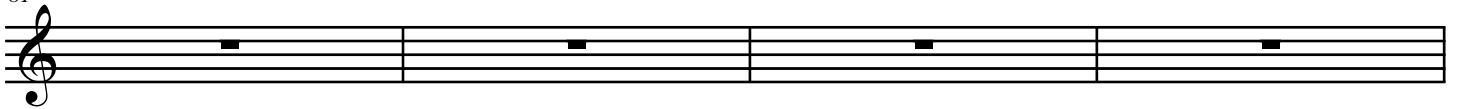
73



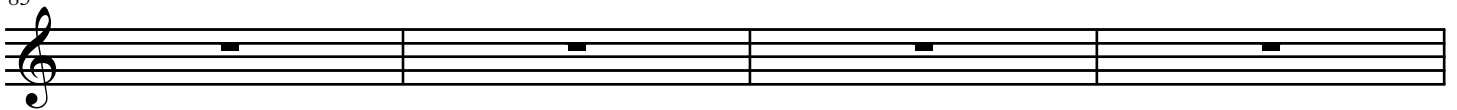
77



81



85



89



93

